

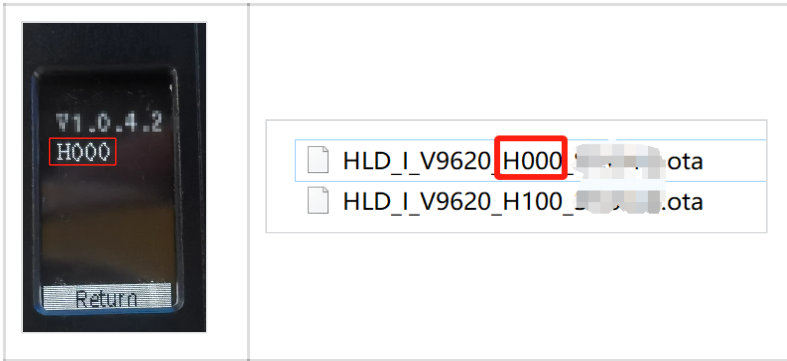
Cosmo C1 Upgrade Guide

Cosmo C1 release records

Release Date	Firmware version	Update content	Firmware download
2024-03-20	V1.0.4.2	<ul style="list-style-type: none">• Add frame freeze when disconnected• Fixed other known issues	Download Path
2022-04-30	V1.0.3.5	<ul style="list-style-type: none">• Fixed the problem of inaccurate refresh frame rate (24 frames and 25 frames)• Fixed other known issues	Download Path

Precautions

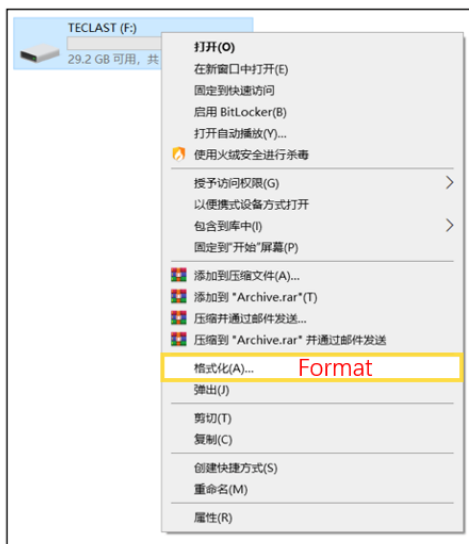
- The USB flash drive must have a capacity of 32GB or less. Otherwise, the USB flash drive cannot be formatted into FAT32 format.
- Maintain sufficient power during the upgrade process. Do not pull out the USB flash drive before the upgrade is successful.
- After the device is upgraded, the default settings are restored.
- **Upgrade may cause unknown errors. Avoid upgrading when you need to use it.**
- For firmware upgrade, please check the device hardware version(H000 or H100) and select the corresponding firmware.



Cosmo C1 upgrade procedure

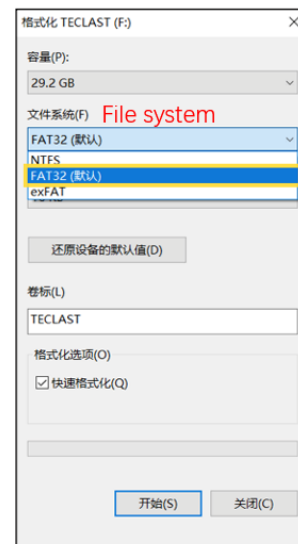
1. Go to the network disk link provided on the page to download the firmware package.
2. Prepare a USB flash disk with a capacity of no more than 32GB Type-C interface. If it is not Type-C interface, use the standard USB Type-C adapter to connect.
3. Connect the USB flash drive to the computer. By formatting, set the format of the USB flash drive to FAT32. Place the upgrade files directly in the root directory of the USB flash drive. Do not create them in the folder.
4. Connect the USB flash drive to the Type-C interface of Cosmo C1. The system automatically recognizes the USB flash drive, restarts the image transmission, and then starts the upgrade. After the upgrade is completed, the image transmission will restart again.

Windows how to set the USB flash disk format



1

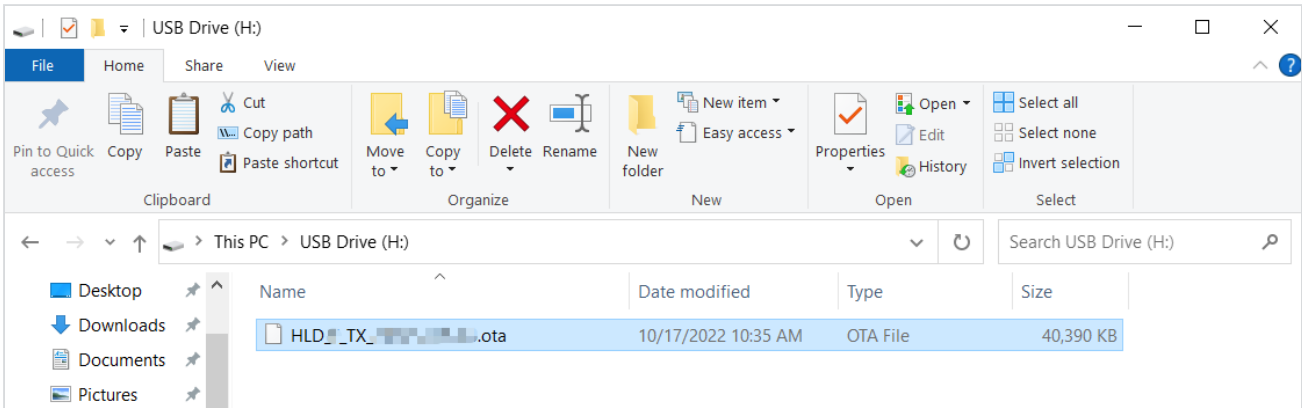
Right click the USB disk and choose format



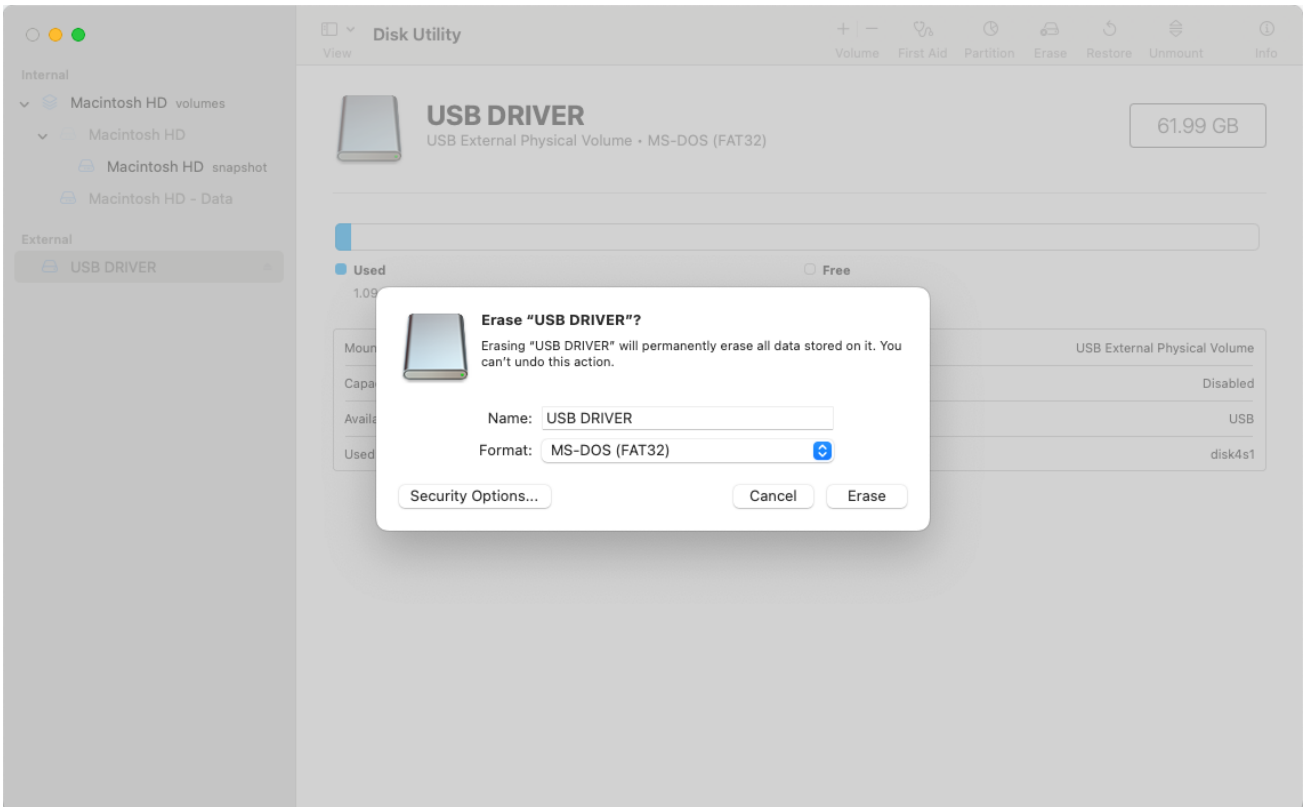
2

Choose the FAT32 format in the "file system"

Copy the OTA file into the root directory



How to Set U disk format for Mac computer



If the upgrade fails multiple times or an exception occurs during the upgrade, contact the technical support staff of Mengma.